

## ChromaLT

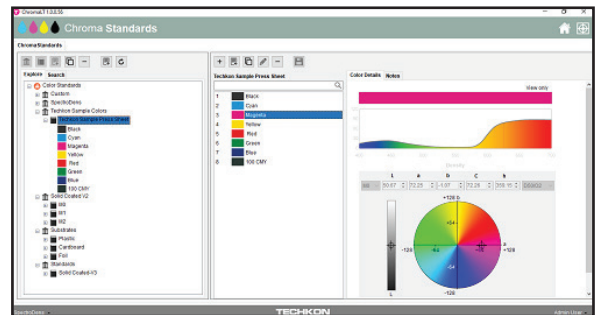
### GET UP TO COLOR FASTER

Designed for small and mid-sized packaging printers who are looking for an affordable solution that is easy to deploy in the pressroom, ChromaLT is the ultimate companion software for your press-side spectrophotometer that makes matching color on press quick and easy. ChromaLT will guide your operators on how to get a match with either specific ink density adjustments or by toning the ink when density adjustments cannot get you there. Give your operators color matching feedback that is easy to understand, actionable, and with clear Pass/Fail indications. When the job is done, the measurements are saved and a report can be generated for the quality department or the end customer to show that colors were printed in tolerances and the job was a success. In the end, ChromaLT will improve your print process efficiencies by removing the color matching guesswork, cutting your make-ready times, and ultimately increasing your profitability.



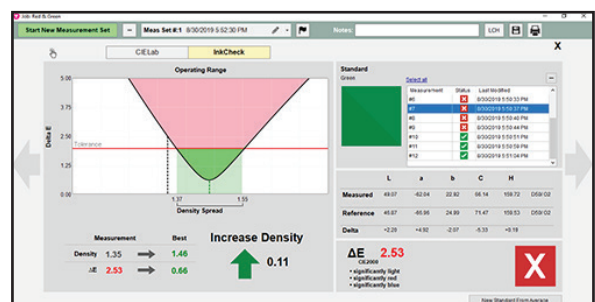
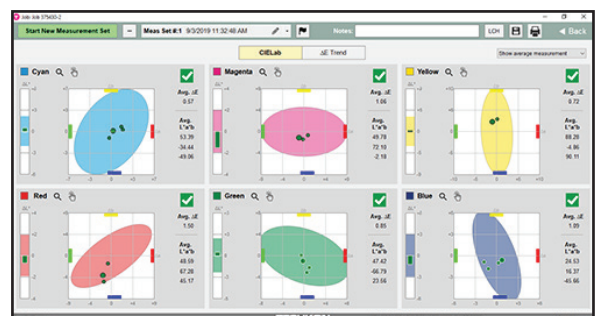
## STORE, ORGANIZE & SEARCH YOUR COLOR STANDARDS

- ▶ Centralize the storage of your color standards by organizing into Books and Libraries
- ▶ Add new colors via measurement, import from file, or text entry
- ▶ Search for colors by name or by deltaE threshold
- ▶ Rationalize or "clean" your color standards database with the Search by deltaE feature to find duplicates and similar colors



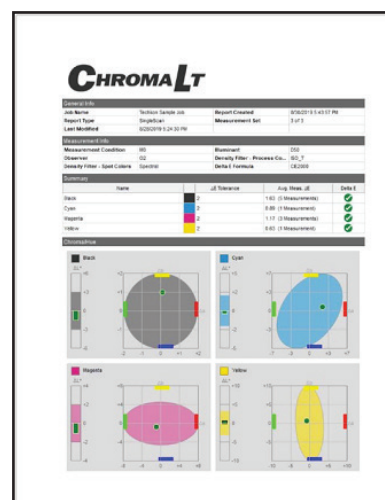
## SIMPLIFY SPOT COLOR MATCHING IN THE PRESSROOM

- ▶ Pick the colors, set the deltaE tolerance for each, and either Save or Run the job immediately
- ▶ Choose up to 8 colors per job and set the deltaE tolerances for each
- ▶ Measure colors in any order and ChromaLT automatically identifies the correct color standard in the job
- ▶ See instant PASS/FAIL and color difference results with easy to understand graphics
- ▶ Get actionable feedback with InkCheck technology which provides specific density adjustments to achieve lowest possible deltaE on press
- ▶ Check to see if your ink needs to be remixed
- ▶ Once in production, periodically check colors and monitor trend charts
- ▶ Create reports for internal and external stake-holders
- ▶ Reduce trial-and-error with actionable feedback and clear direction for operators



## STORE & REPORT ON YOUR PRODUCTION DATA

- ▶ Create customized job reports with either your logo or your customers logo
- ▶ Automatically filter out “make-ready” measurements from reports
- ▶ Report on a single measured sample or the average of multiple samples
- ▶ Plot trend graphs to show the quality throughout a press run
- ▶ Provide detailed job reports to the brand owner or customer
- ▶ Maintain a history for how an item or colors print over time



FEATURES	ChromaLT	ChromaQA
Solid colors -> ΔE	✓	✓
Techkon InkCheck (density adjustments for lowest ΔE)	✓	✓
Trend Analysis	✓	✓
Job Reports	✓	✓
Manage Color Standards	✓	✓
Supports SpectroDens handheld spectrophotometer	✓	✓
Supports popular 3rd party spectrophotometers	✓	
Supports SpectroVision inline spectrophotometer		✓
TV / TVI for tint patches		✓
G7 process verification		✓
Score Card system		✓
Dynamic Query module		✓
MIS integration / Auto Job Creation		✓
Data on Chroma Cloud Server		✓
Enterprise Color Quality Solution		✓